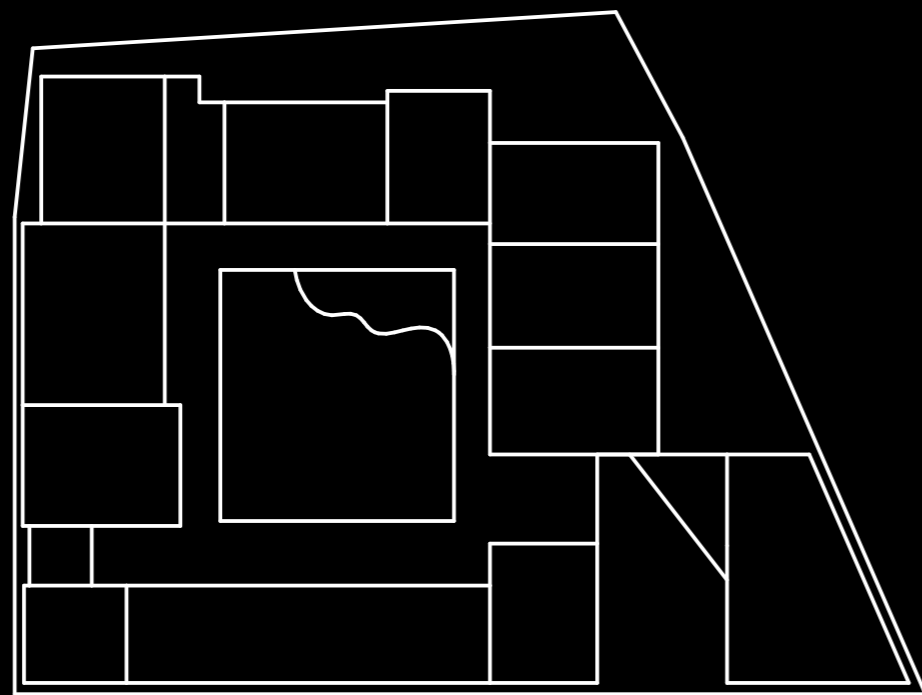
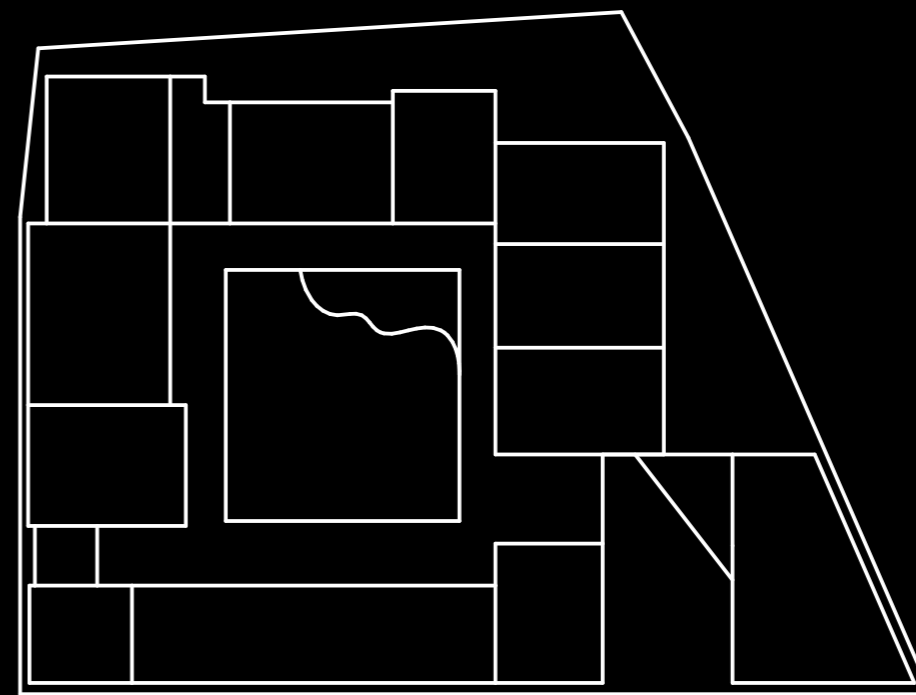


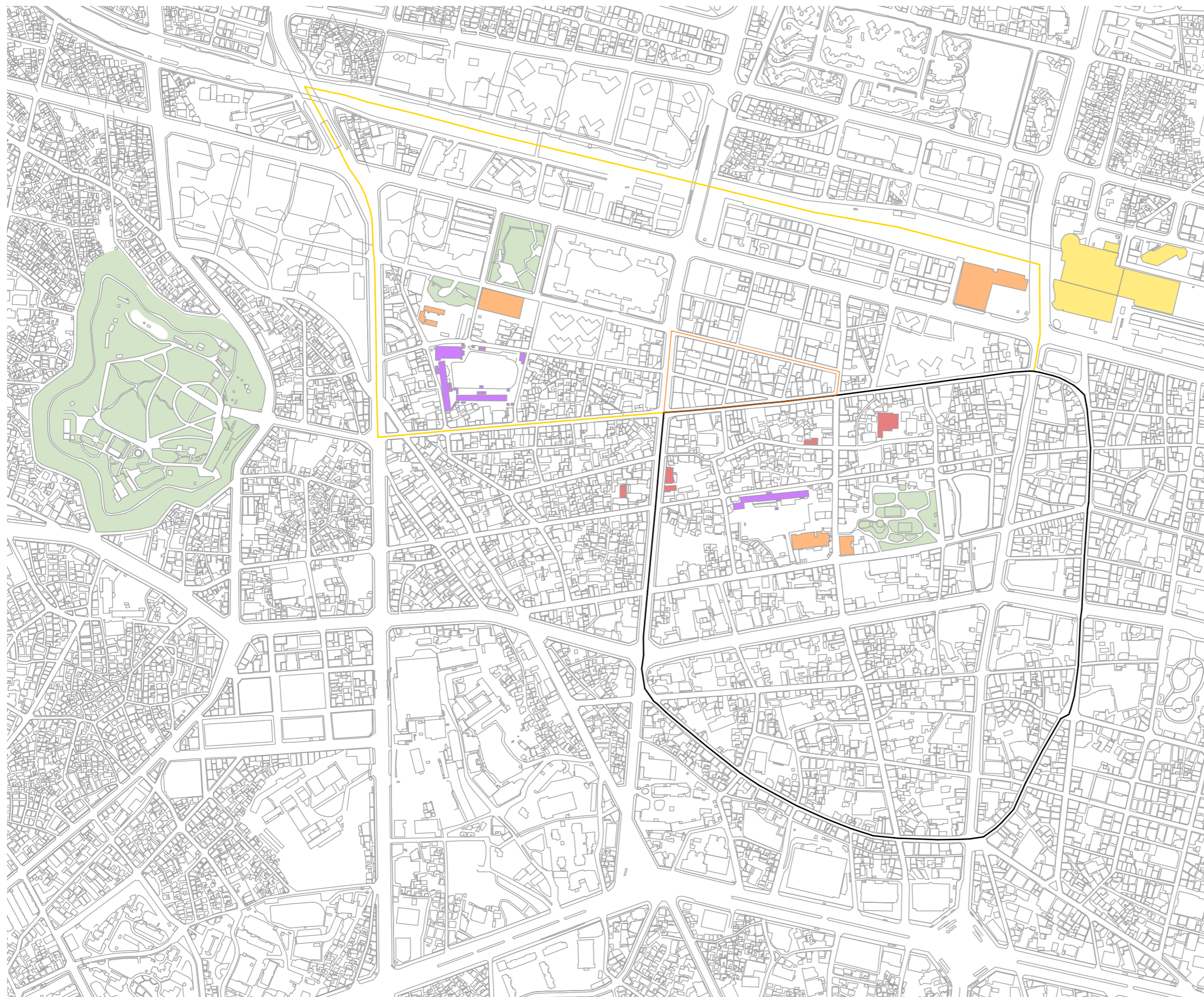
HANOK , URBAN



5



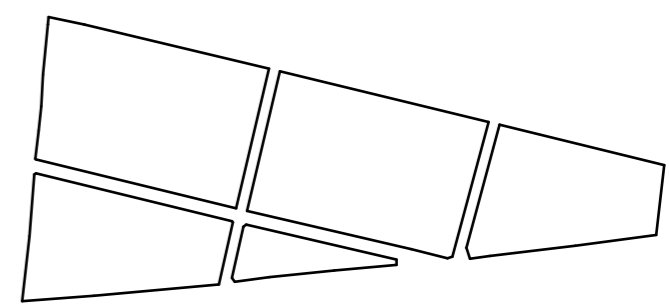
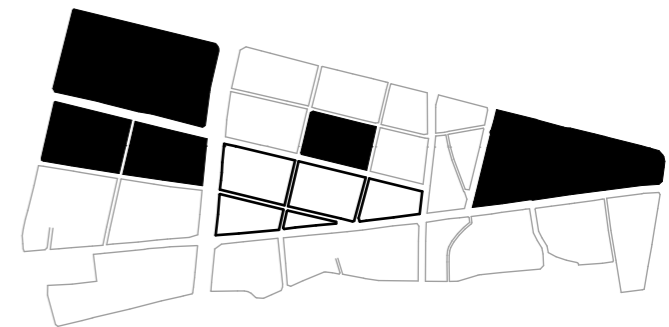
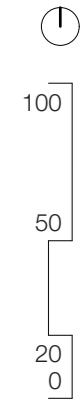
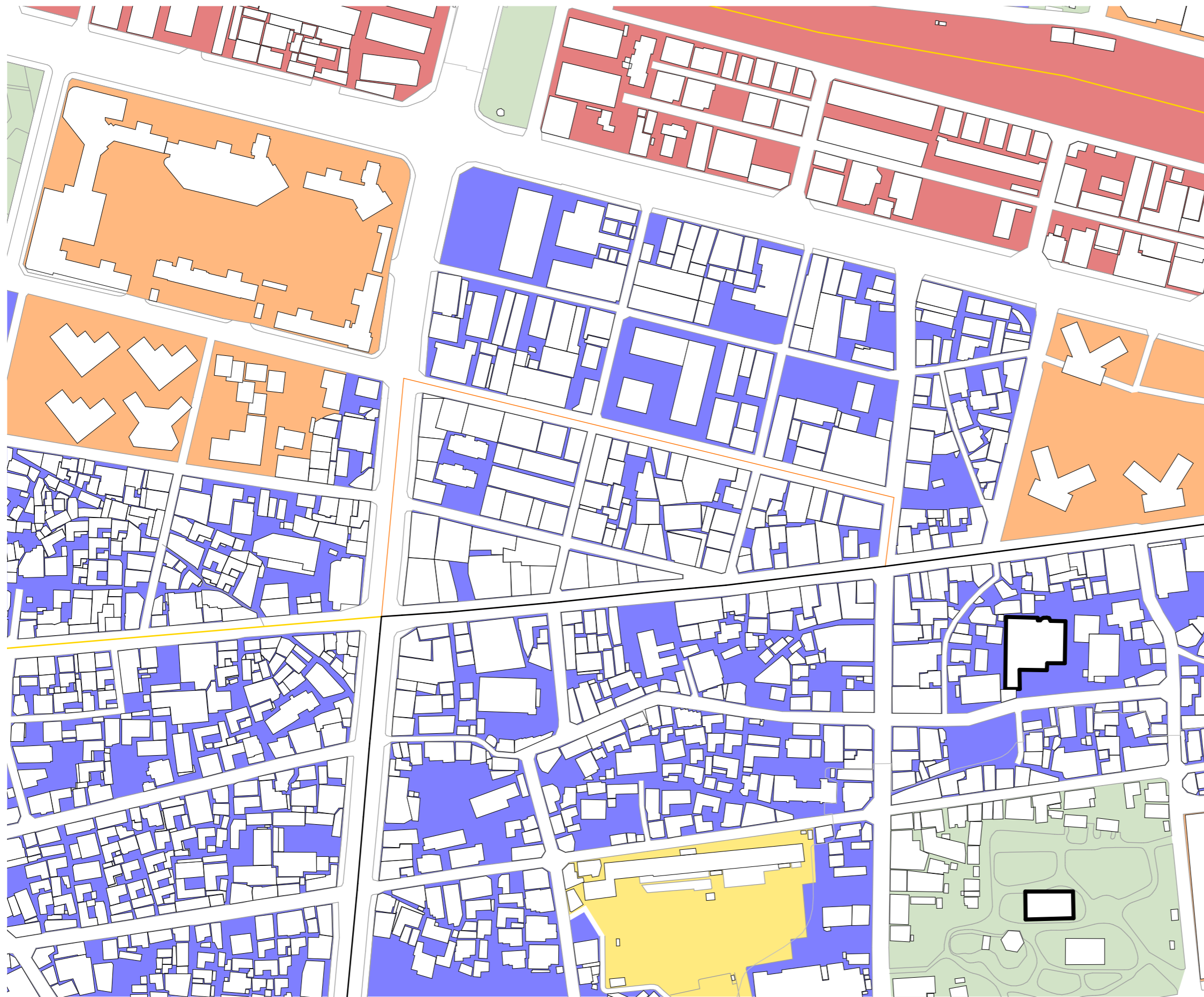
25



MIXED USE URBAN BLOCK

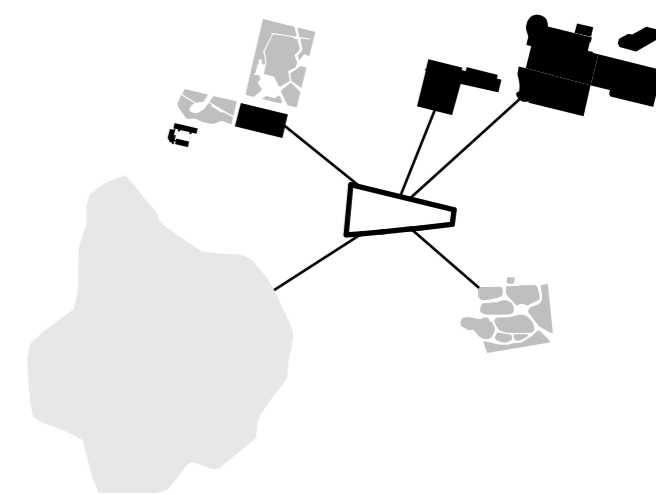
- park ■
- school ■
- church ■
- culture ■
- main station ■

theme **name and location**

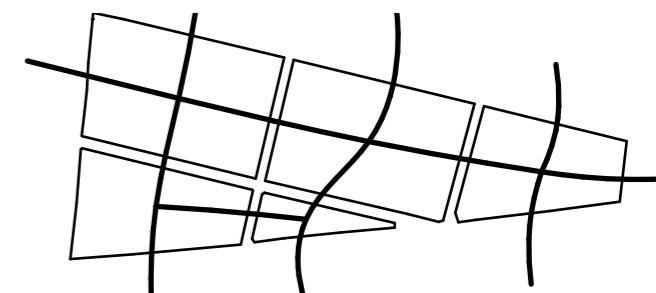


- park ■
- old city ■
- railway / industrial ■
- apartment ■
- school ■

urban fabric **block identity & density**



connections **cars**










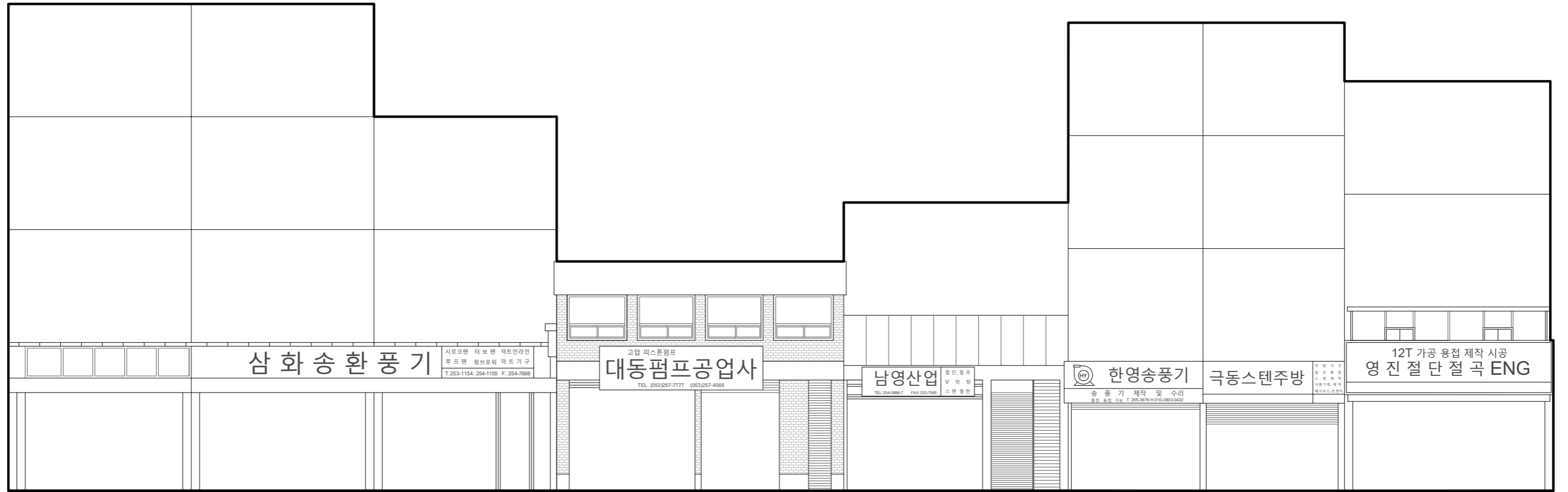
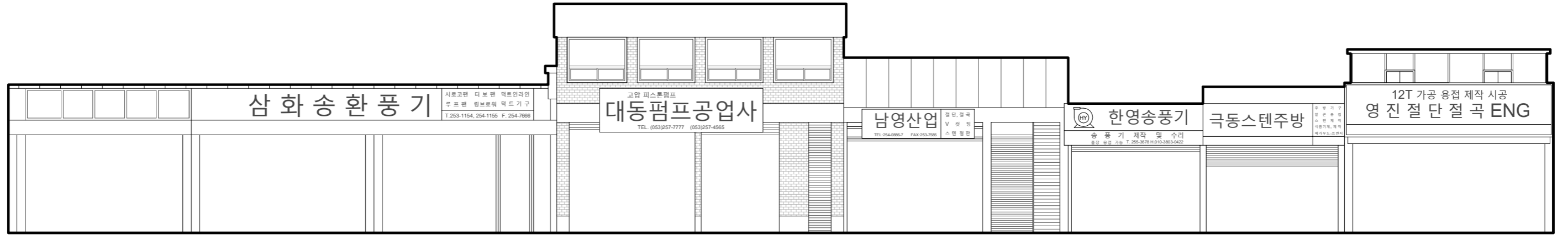
connections **pedestrians**



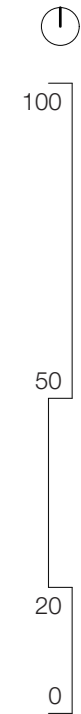
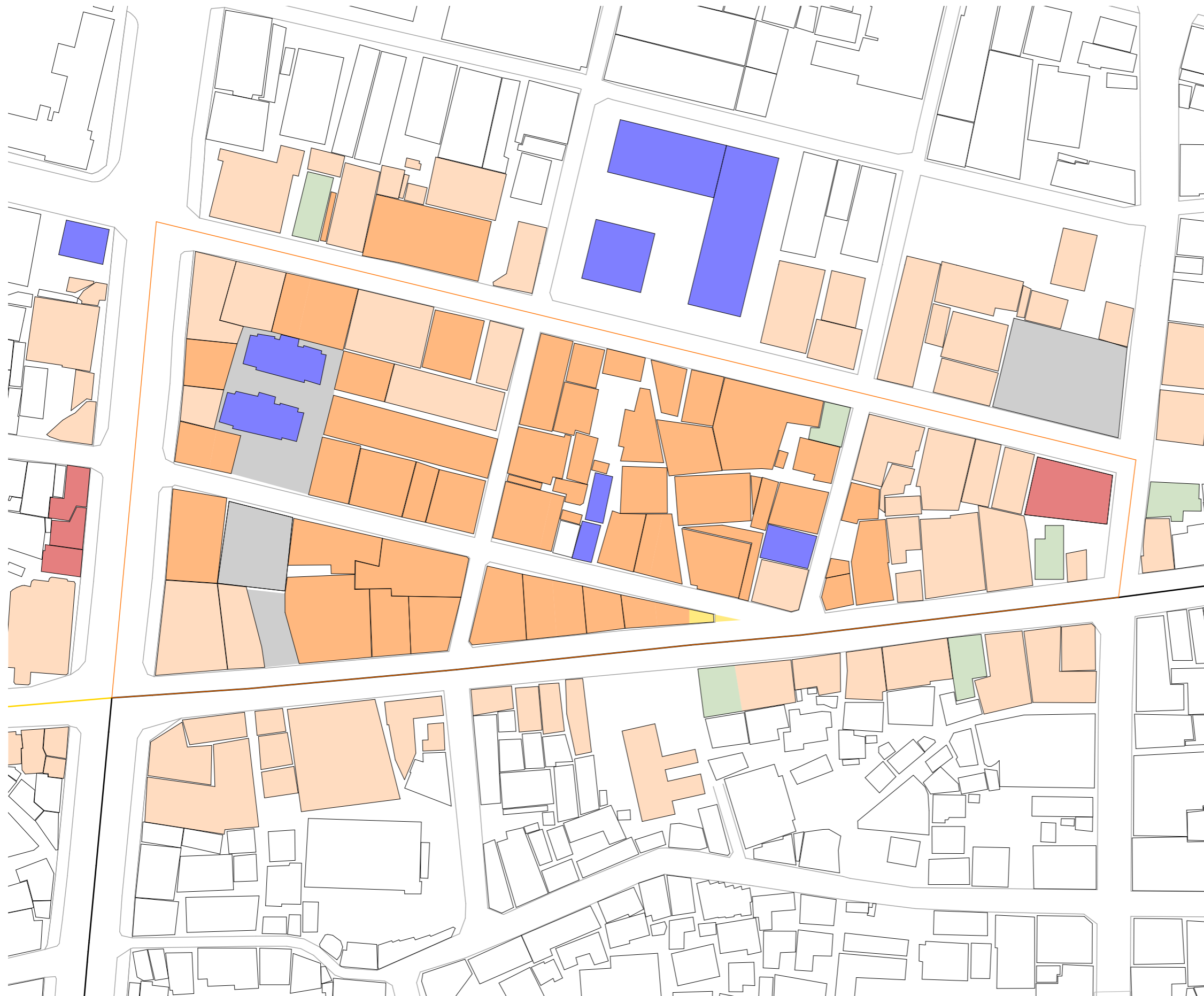
urban fabric **structure & access**



- anchor 
 - concrete 
 - sheet 
 - glass 
 - tile 
 - plate 
 - brick 
 - brick + tiled base + mirrored glass 
- urban fabric **materiality & anchors**



urban fabric **structure & access & material & anchor**

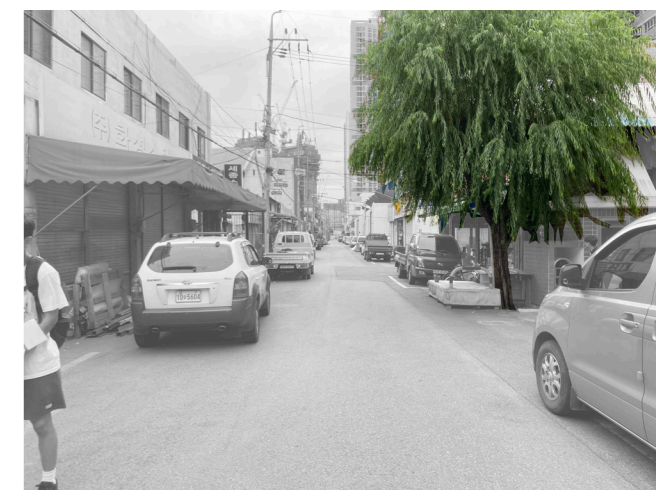
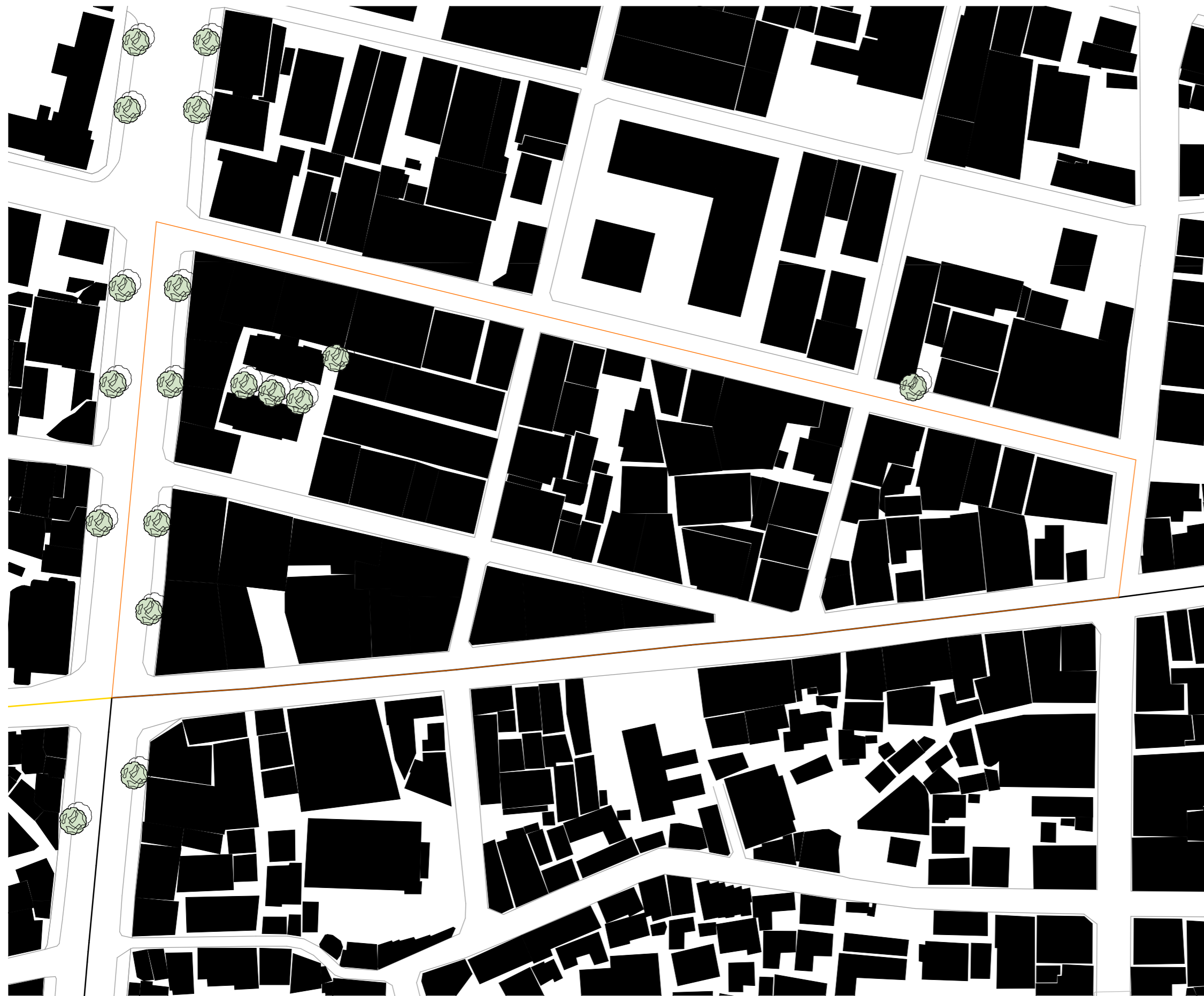


STEELSTEELSTEELSTEELSTEEL

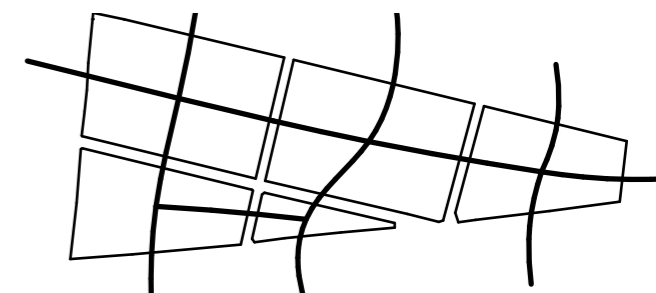
LIVING LIVING GUEST HOUSE OFFICE OFFICE CRAFT LIVING
 RESTAURANT OFFICE RESTAURANT COMICBOOK CAFE BOOKSTORE FACTORY STUDIO

- parking
- restaurant
- monument
- industrie & production related shops
- factory
- bank
- residential / dormitory

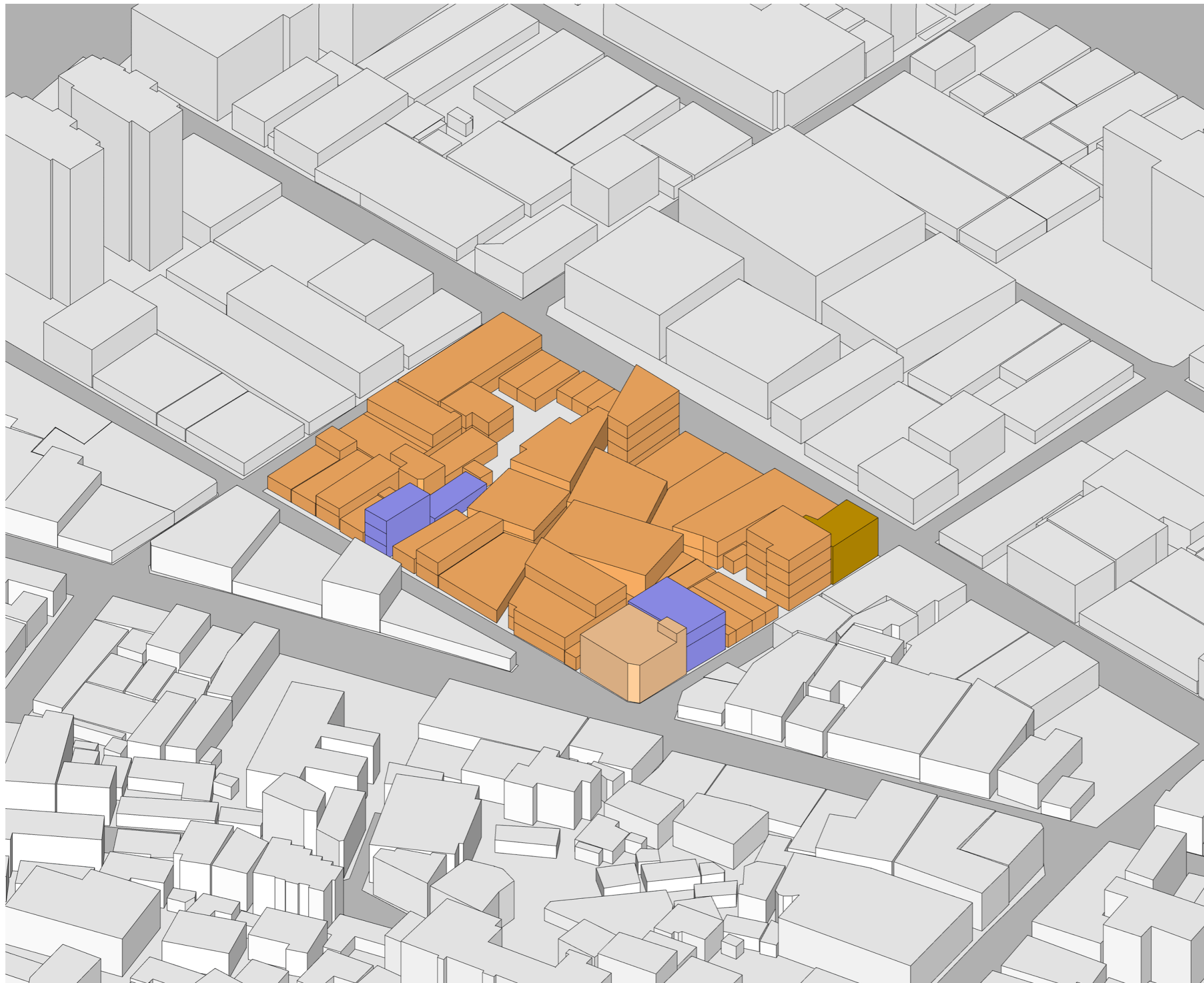
urban fabric **uses**



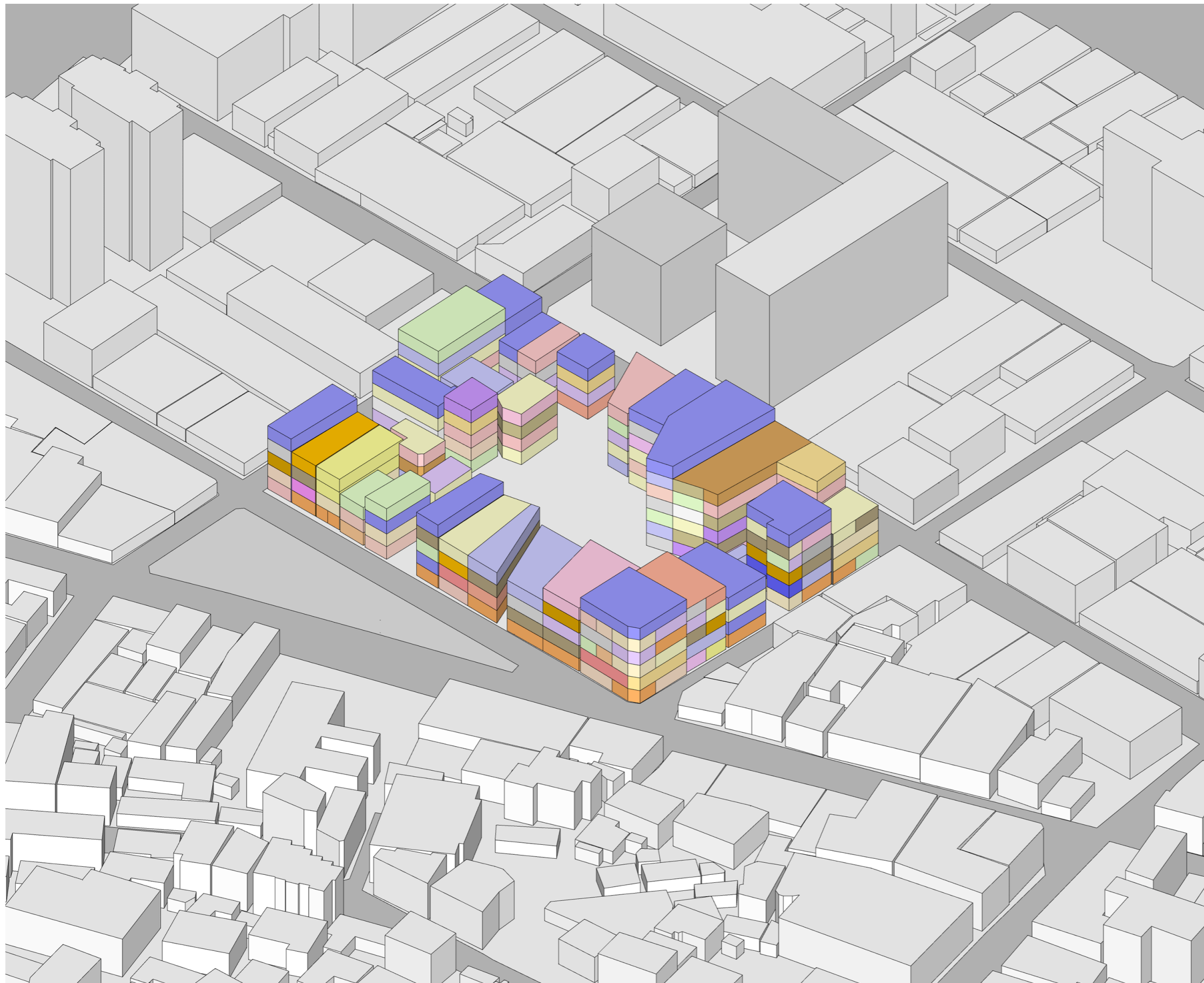
green **black plan**



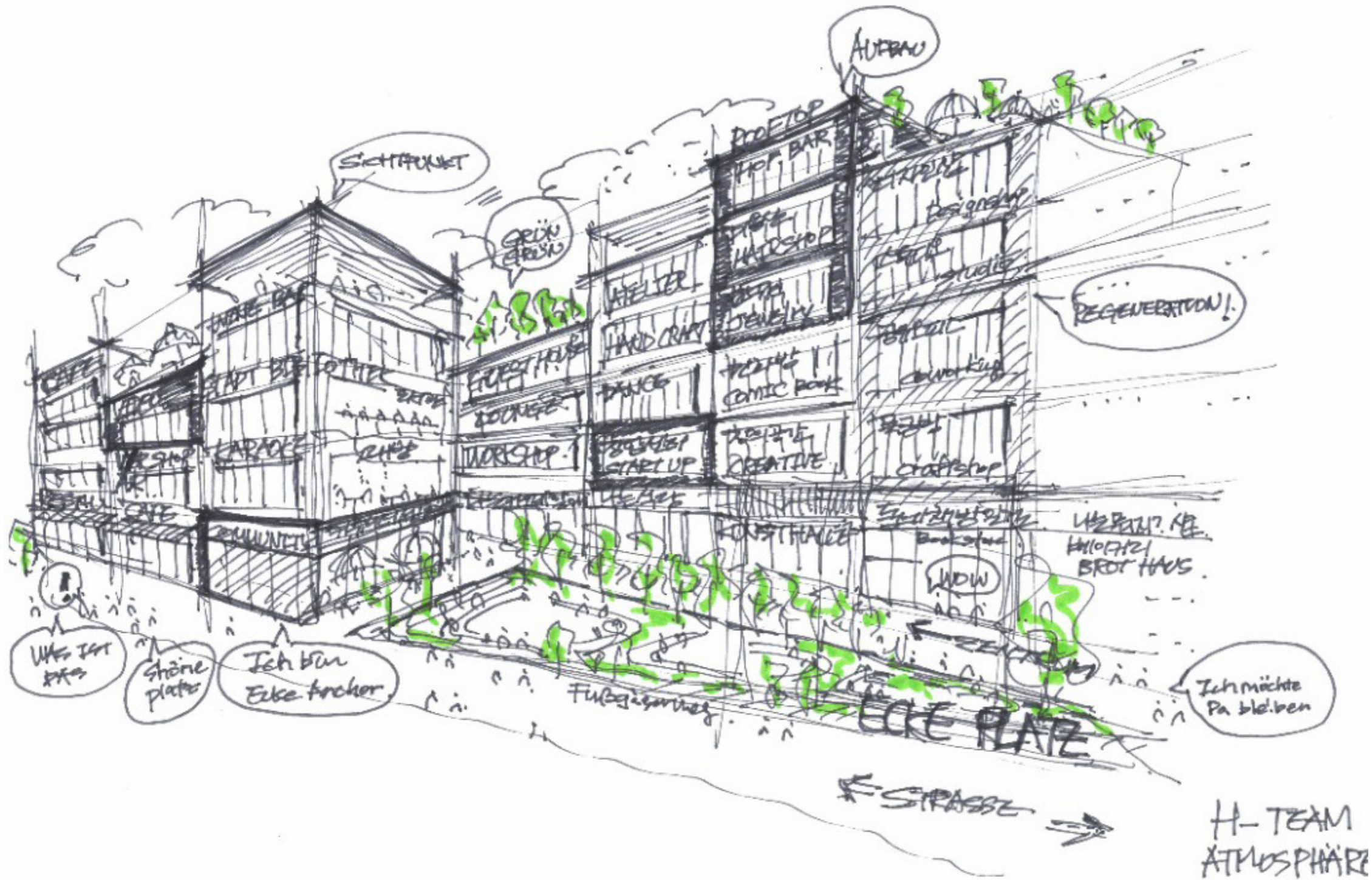
green **network**



3D Block **old uses**

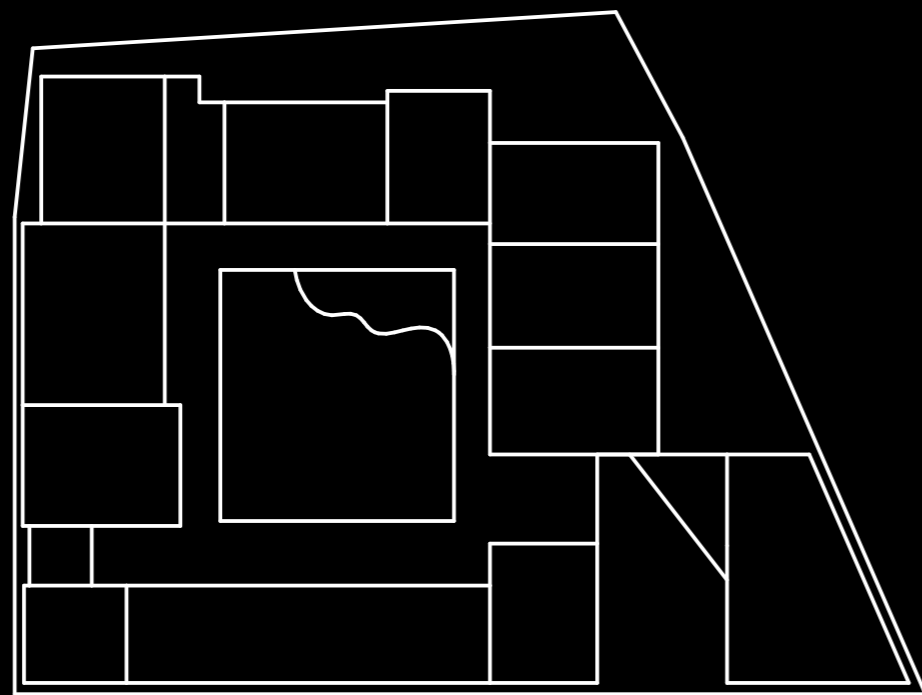


3D Block **new uses**

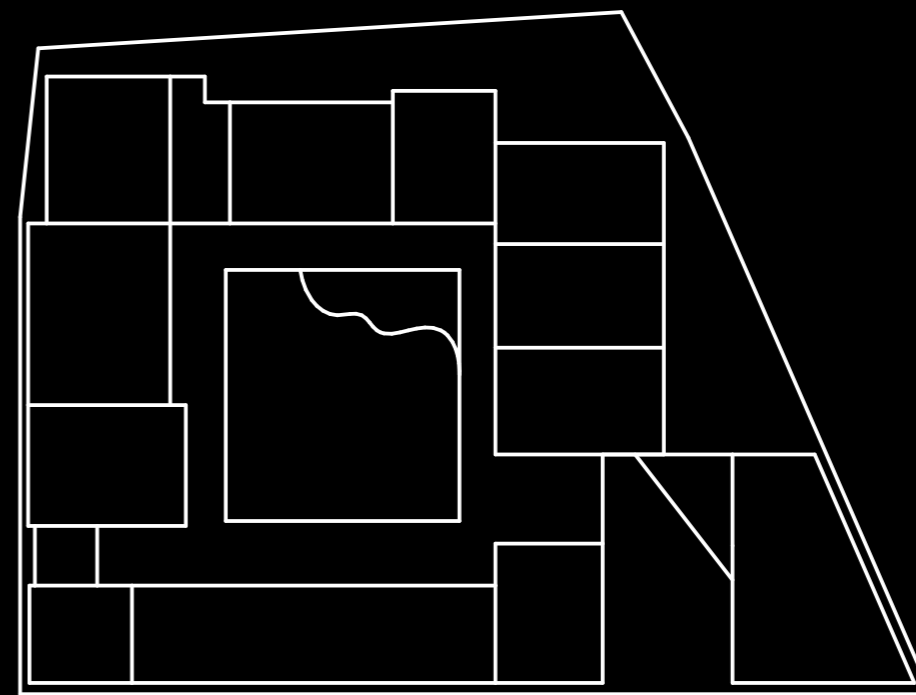


Square new uses as per Prof. Hong Yeon Yoon

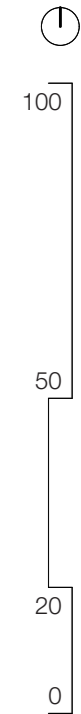
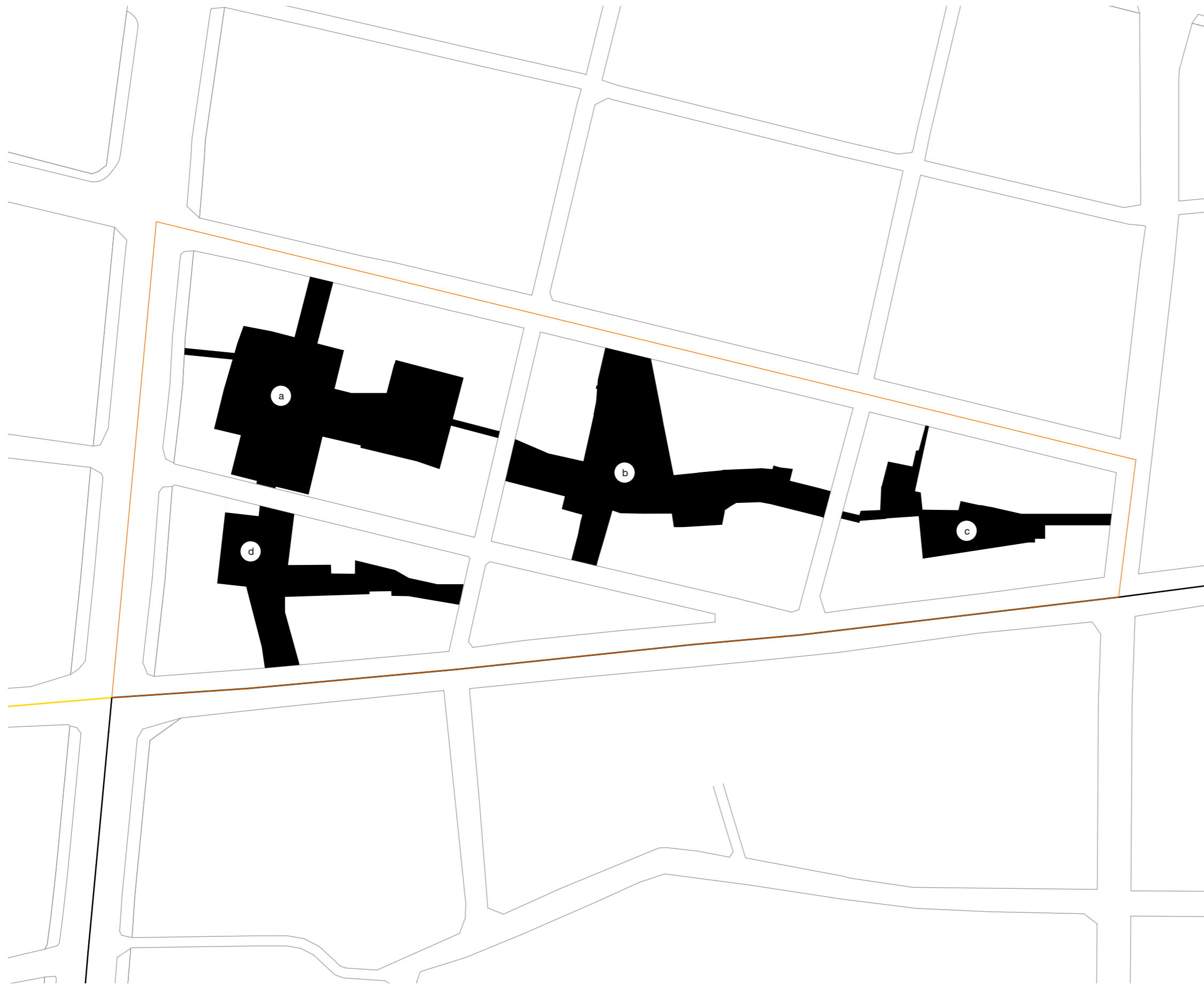
HANOK , URBAN



5



25

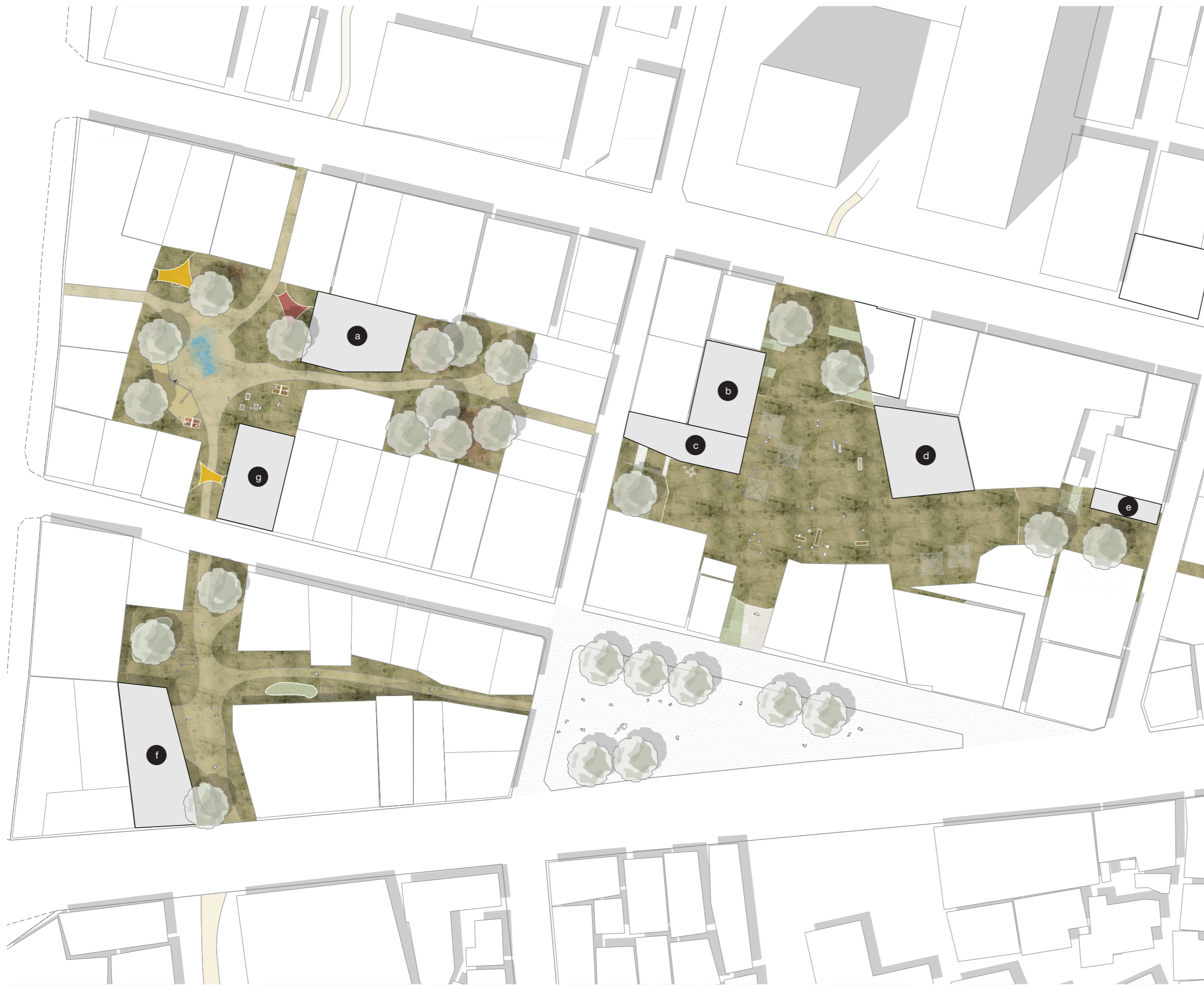


- a
- b
- c
- d

vision **courtyards & uses**



vision **masterplan**



- cafe **g**
- neighbour lab **f**
- restaurant **e**
- library **d**
- restaurant **c**
- cinema **b**
- kindergarden **a**

vision **masterplan**



vision **students hanok**



vision **children hanok**